



Redwood Park

at Jumeirah Golf Estates

YOUR PASSION
YOUR COMMUNITY
YOUR WORLD



JUMEIRAH
GOLF ESTATES





Jumeirah Golf Estates is an exclusive community, steeped in breathtaking beautiful acres of spectacular scenery coupled with every world-class amenity you'd expect from a life of privilege. Home to the DP World Tour Championship, the community is located close to Al Maktoum International Airport, just minutes from many of the city's landmark developments, including Palm Jumeirah, the multi-award winning Burj Al Arab hotel, and Burj Khalifa, the world's tallest building. Blending the best in modern living with the wonders of nature, Jumeirah Golf Estates presents the rare opportunity of living in a community that has been carefully planned to meet the needs of the modern family. Inspired by the majesty of nature, with stunning architecture, incredible views, wonderful amenities and an exclusive location in the world's fastest growing city, the community offers an unmatched way of life for its residents.





Redwood
at Jumeirah Golf Estates





Redwood Park is a unique collection of seventy-five modern townhouses designed to provide the best in modern living, along with the scope to truly make your home your own. Four golf courses celebrate the wonders of nature's elements and complement the enduring enjoyment to be had from living within this truly world-class residential community.



Redwood Park
at Jumeirah Golf Estates





REDWOOD PARK



Spacious three to four-bedroom townhouses fully landscaped with a water fountain take refined living to a whole new level. With spectacular fairway views of the Fire Course, beautiful landscaped gardens and leisure spaces all walking distance from the Clubhouse, family life is, quite simply, out of this world.

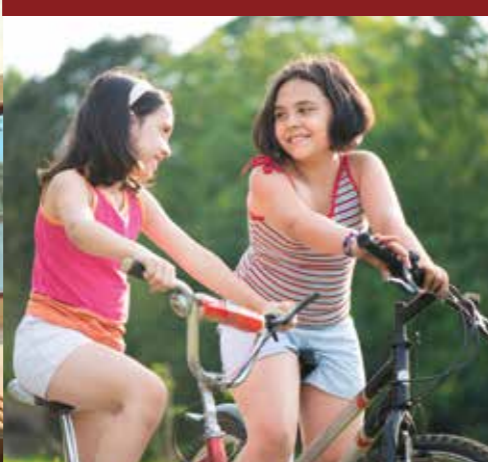


Redwood Park
at Jumeirah Golf Estates





TOWNHOUSES





Redwood Park
at Jumeirah Golf Estates



AMENITIES



- Covered parking for two cars
- Visitor's parking
- Paved walkways
- Shaded kids play area
- Fountain
- Water features
- BBQ kiosk
- Lavish landscaping





Redwood Park

at Jumeirah Golf Estates







Redwood Park
at Jumeirah Golf Estates



EUROPEAN LIVING KITCHEN & DINING ROOM



Laminated, glossy lacquered or wooden veneer finish and ironmongery to Blum or equivalent standard

Black granite counter tops with top of the range built-in white goods

Porcelain flooring

Decorative extraction hood



Redwood Park
at Jumeirah Golf Estates



EUROPEAN HOME FLOORING



Glazed porcelain flooring throughout living areas, bedrooms and hallways

Polished Crema Marfil marble for the staircase

Natural granite for entrance steps and porch





Redwood Park

at Jumeirah Golf Estates





EUROPEAN BEDROOM & BATH



Redwood Park
at Jumeirah Golf Estates







Redwood

at Jumeirah Golf Estates



CLUBHOUSE



World-class facilities at the Clubhouse

The Clubhouse presents a range of the finest offerings and facilities for golf, sports and leisure enthusiasts. Adjacent to the golf and tennis academies, the 131,000 square-foot Clubhouse offers a variety of sports and leisure services.





Redwood
at Jumeirah Golf Estates





Swirl Bar & Lounge

Fresca Delicatessen & Café

Race to Dubai Suite

Extensive Terrace Areas

Swimming Pool

Children's Swimming Pool

Events Lawn

Men's Locker Rooms with
Jacuzzi and Steam Room

Ladies Locker Rooms

Boardroom

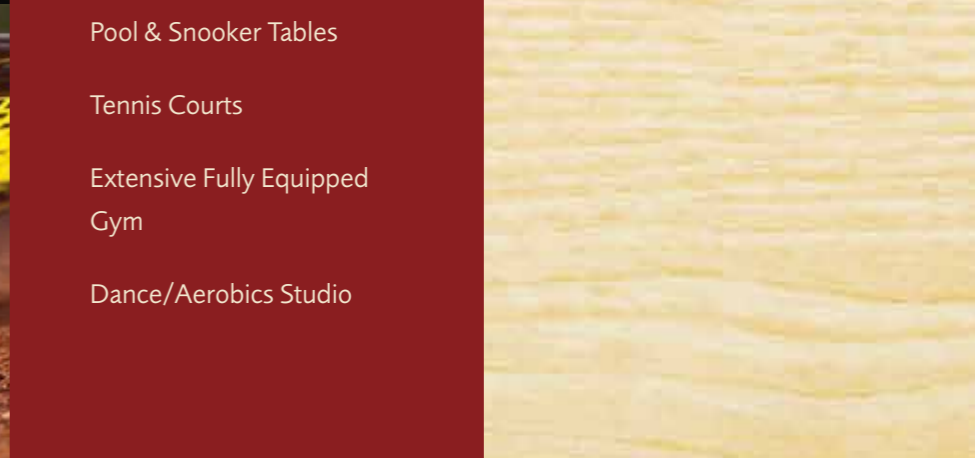
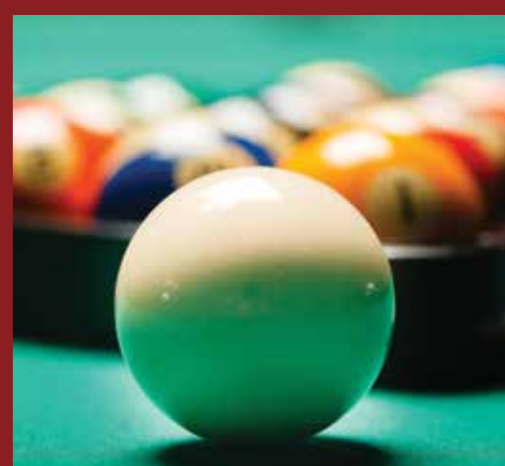
Retail Shop

Pool & Snooker Tables

Tennis Courts

Extensive Fully Equipped
Gym

Dance/Aerobics Studio





Redwood
at Jumeirah Golf Estates



European Tour Performance Institute (ETPI)

The European Tour Performance Institute at Jumeirah Golf Estates is one of only two facilities of its kind in the world and is recognized for its unique features designed specifically to enhance the performance of golfers at every level of play. The latest tools and technologies are at hand to help them fine-tune and hone their game throughout the year.

ETPI Facility

A world-class facility designed to enhance the performance of Tour professionals and members alike. Using cutting-edge technology, the facility delivers unrivalled coaching and practice opportunities. The range of coaching and practice amenities includes a state-of-the-art gymnasium, biomechanical swing studios, physiotherapy treatment rooms, dedicated short game holes, practice bunkers, large contoured putting green, and practice teeing areas. Instructional programmes also employ state-of-the-art coaching concepts.

ETPI Services

Golf coaching is available at the highest standard by our hand-picked team of PGA professionals. Services cover all aspects of the game, establishing goals and training programs tailored to individual aspirations.

Titleist and Ping Custom fit studio with state-of-the-art technology, designed to provide the latest made-to-measure equipment to help bring out the best in every player.

Dedicated Personal Trainers to develop and enhance overall health and fitness programmes. Trainers can tailor golf-specific training packages according to individual physical capabilities.

Sports Medical assessments by our onsite Physiotherapists, working on injuries and prevention, as well as golf-specific training to increase your physical capabilities.

Each service may be seen individually or in synergy to create the ultimate team to work towards your aspirations.





Redwood
at Jumeirah Golf Estates



THE DP WORLD TOUR



CHAMPIONSHIP



Henrik Stenson

The Earth Course draws the world's best players, including Jumeriah Golf Estates' Brand Ambassador, Henrik Stenson to the DP World Tour Championship, the Season Finale of the European Tour's Race to Dubai. Over the year, the European Tour's professional golfers compete in 48 tournaments over four continents to secure a place at Jumeirah Golf Estates. Only the top 60 players qualify to compete for one of the world's richest golf prizes.

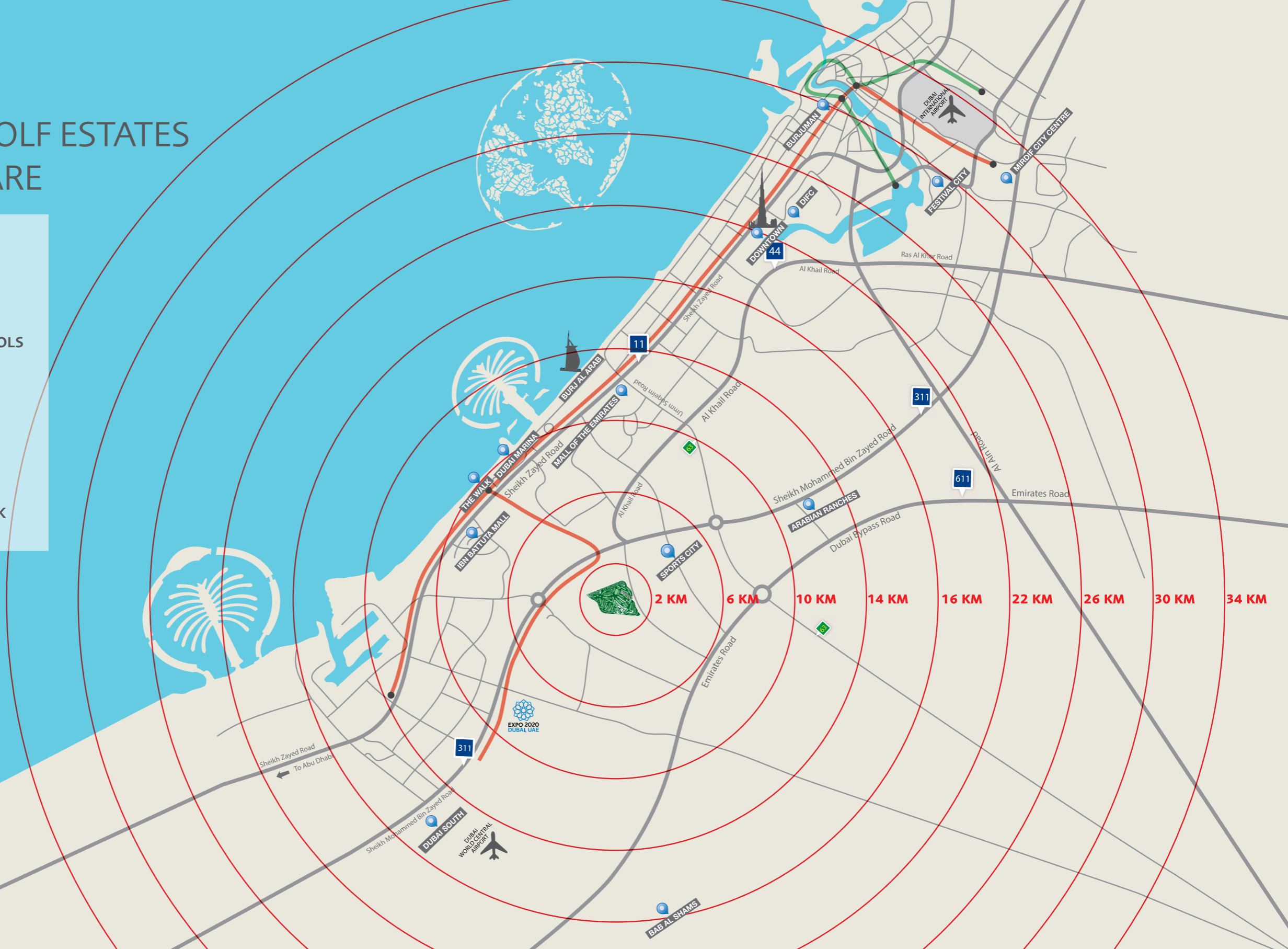
The finale at Jumeirah Golf Estates attracts the biggest names in golf and over 65,000 fans descend to watch one of the biggest golf events in the world.



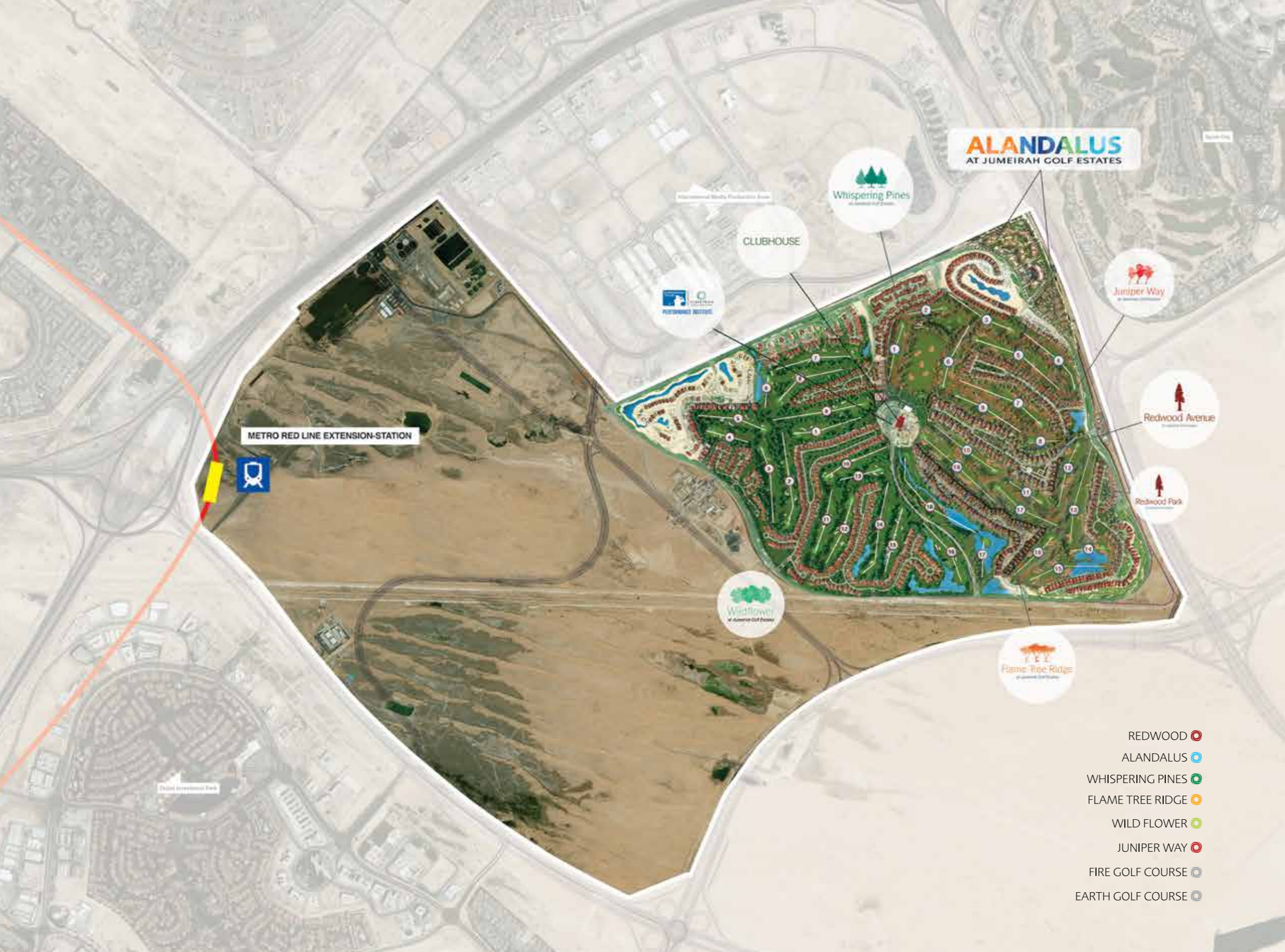
JUMEIRAH GOLF ESTATES WHERE WE ARE

LOCATED NEARBY:

-  HOSPITALS
-  INTERNATIONAL SCHOOLS
-  KEY SPORTS FACILITIES
-  SHOPPING MALLS
-  RESTAURANTS
-  UPCOMING THEME PARK



JUMEIRAH GOLF ESTATES MASTER PLAN



- REDWOOD ●
- ALANDALUS ●
- WHISPERING PINES ●
- FLAME TREE RIDGE ●
- WILD FLOWER ●
- JUNIPER WAY ●
- FIRE GOLF COURSE ●
- EARTH GOLF COURSE ●

Pocket for booklet

The visuals, images and pictures found in this brochure are for illustration purposes only and are not to be construed as representing the actual and final impression of our concept, products, services, or ideas for Redwood Park and is subject to change.